



A precise solution for the medical preservation

When you need clinical-grade storage, it's important to choose a refrigerator or freezer that is designed specifically for the demands that come with these kinds of environments. Whether it's a concern with temperature variation impacting sensitive materials, size, sound, energy use, or all of the above and more, we have the storage solution for you and for the needs of your environment.

For the perfect fit of your application, choose from the various options of upright models, large size floor models to jumbo double door models. We also offer smartly designed two zone temperature refrigerator combined with freezer. Manufactured at state of the art manufacturing facility with automated machinery and quality testing equipments.

Ergonomically designed chambers for single hand operations



Auto Defrost



Forced Air Draft
Circulation



Uniform
Temperature



Lower Noise

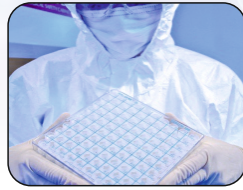


Environment
Friendly



Intelligent
Alarms

Deep Freezer (-25°C)



Standard Features

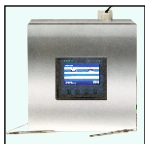
Inner body	Stainless Steel (SS 304)
Outer body	PPGI (Pre-Painted Galvanised Iron)
Insulation	High density CFC free PUF insulation
Door	Plasma Freezer Solid insulated door with lock & handle. Magnetic gasket is provided for airtight sealing The door has non metallic internal surface
Moveability	Castor wheels are provided for easy movement with an option for having locks
Controller	Electronic controller with digital display
Alarms	Temperature deviation alarm and door ajar alarm
Cooling System	Hermetically sealed cooling system for efficient cooling & with auto-defrost system Low noise and low power consumption Fan cooled condensing unit and silent fan evaporator unit
Power supply	230 Volts 50 Hz main supply. Also available with 60 Hz cycle

Selection Guide

Model	Capacity		Internal Size (H*W*D) mm	External Size (H*W*D) mm	Trays Qty.	Equipment Weight (kg)
	CuFt.	Liter				
NLDF7S	7	200	510 X 560 X 700	1500 X 720 X 880	2	150
NLDF11S	11	300	910 X 560 X 590	1955 X 720 X 770	3	200
NLDF14S	14	400	910 X 560 X 785	1955 X 720 X 965	3	250
NLDF25S	25	700	1200 X 800 X 730	2120 X 960 X 1020	4	280

Optional Accessories

Data Logger	To automatically record parameters
Circular chart recorder	To archive data points over a time interval



Data Logger



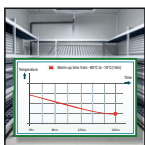
Circular Chart Recorder



Adjustable Trays



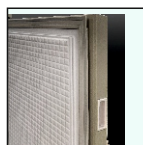
Digital Controller with Audio Visual Alarm



Low Power Consumption



Low Noise Cooling System



Completely Leakproof door

Double Door Deep Freezer (-25°C)



Standard Features

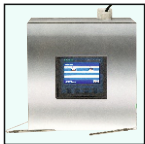
Inner body	Stainless Steel (SS 304)
Outer body	Pre Painted Galvanised Iron
Insulation	High density CFC free PUF insulation
Door	Solid insulated door with lock & handle. The door has non metallic internal surface Magnetic gasket is provided for airtight sealing
Moveability	Castor wheels are provided for easy movement with an option for having locks
Controller	Electronic controller with digital display
Alarms	Temperature deviation alarm and door ajar alarm
Cooling System	Hermetically sealed cooling system for efficient cooling with auto-defrost system Low noise and low power consumption Fan cooled condensing unit and silent fan evaporator unit
Power supply	230 Volts 50 Hz main supply. Also available with 60 Hz cycle

Selection Guide

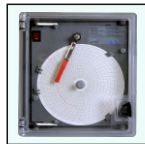
Model	Capacity		Internal Size (H*W*D) mm	External Size (H*W*D) mm	Trays Qty.	Equipment Weight (kg)
	CuFt.	Liter				
NLDF34S	34	1050	1200 X 1200 X 730	2110 X 1360 X 1020	8	325
NLDF54S	54	1500	1200 X 1500 X 830	2110 X 1660 X 1120	8	375

Optional Accessories

Data Logger	To automatically record parameters
Circular chart recorder	To archive data points over a time interval



Data Logger



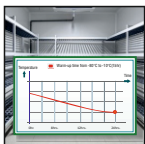
Circular Chart Recorder



Adjustable Trays



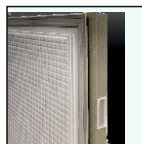
Digital Controller with Audio Visual Alarm



Low Power Consumption



Low Noise Cooling System



Completely Leakproof door

Combo Refrigerators (Upper Chamber 2°C TO 8°C) | (Lower Chamber 0°C TO -25°C)

The Combo Refrigerators is a smartly designed two zone temperature refrigerator combined with freezer. The designs facilitates two different temperature ranges in a single equipment. The Upper chamber is set at 4°C and the Lower chamber is set at -25°C. To ensure smooth operations & energy efficiencies, the cooling operations are managed through a single compressor.



Standard Features

Inner body	Stainless Steel (SS 304)
Outer body	PPGI (Pre-Painted Galvanised Iron)
Insulation	High density CFC free PUF insulation
Door	Solid insulated door with lock & handle. Magnetic gasket is provided for airtight sealing The door has non metallic internal surface
Moveability	Castor wheels are provided for easy movement with an option for having locks
Controller	Complete operations are driven through an IOT enabled controller
Alarms	Temperature deviation alarm and door ajar alarm
Cooling System	Hermetically sealed cooling system for efficient cooling with auto-defrost system Low noise and Low power consumption. Fan cooled condensing unit and silent fan evaporator unit
Power supply	230 Volts AC , 50 Hz mains supply. Also available with 60 Hz cycle

Selection Guide

Model	Capacity	Internal Size (H*W*D) mm	External Size (H*W*D) mm	Trays Qty.	Equipment Weight (kg)
	Liter				
NLPR14S	200 + 200	510 X 560 X 700	2070 X 720 X 1005	2+2	300

Optional Accessories

Data Logger	To automatically record parameters
Circular chart recorder	To archive data points over a time interval



Data Logger



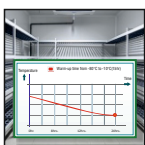
Circular Chart Recorder



Adjustable Trays



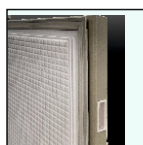
Digital Controller with Audio Visual Alarm



Low Power Consumption



Low Noise Cooling System



Completely Leakproof door