

Leading Solution For Blood Bank Refrigeration

The blood bank refrigerator is an essential piece of equipment in the immuno-hematology department and provides safe and convenient storage of whole blood, blood components (e.g, blood cells, plasma), and reagents. Blood bank refrigerators ensure freshness and integrity of blood and blood components. Our Blood Bank Refrigerators meet the highest regulatory requirements.

Ergonomically designed chambers for single hand operations



Cyclic Defrost



Forced Air Draft Circulation



Uniform Temperature



Low Noise



Environment Friendly



Intelligent Alarms

Blood Bank Refrigerator

Temp. Range: 2°C to 6°C

Standard Features

| | |
|----------------|--|
| Inner body | Ss304 |
| Outer body | Pre Coated Galvanised Iron |
| Insulation | High density CFC free PUF insulation |
| Door | Multi layer transparent door with lock & handle Magnetic gasket is provided for airtight sealing |
| Moveability | Castor wheels are provided for easy movement with an option for having locks |
| Controller | Electronic controller with digital display |
| Lighting | Bright LED interior lighting |
| Alarms | Temperature deviation alarm and door ajar alarm |
| Cooling System | CFC free cooling system. The compressor is hermetically sealed for better efficiency It has low noise and has low power consumption. |
| Power supply | 230 Volts 50 Hz main supply. Also available with 60 Hz cycle |
| Safety | Anti-frost safety device. |



Selection Guide

| Model | Capacity | | Internal Size (H*W*D) mm | External Size (H*W*D) mm | Drawers Qty. | Single Drawer Blood Bag Capacity | All Drawer Blood Bag Capacity | Equipment Weight (kg) |
|----------|----------|-------|--------------------------|--------------------------|--------------|----------------------------------|-------------------------------|-----------------------|
| | CuFt. | Liter | | | | | | |
| NLBR7MI | 7 | 200 | 825 X 490 X 495 | 1445 X 590 X 610 | 3 | 36 | 108 | 150 |
| NLBR11MI | 11 | 300 | 1000 X 600 X 500 | 1675 X 700 X 615 | 4 | 52 | 208 | 200 |
| NLBR14MI | 14 | 400 | 1000 X 600 X 670 | 1675 X 700 X 785 | 4 | 76 | 304 | 250 |
| NLBR17MI | 17 | 500 | 1200 X 600 X 695 | 1875 X 700 X 810 | 5 | 76 | 380 | 300 |

Optional Accessories

| | |
|-------------------------|---|
| Data Logger | To automatically record parameters |
| Circular chart recorder | To archive data points over a time interval |



Data Logger



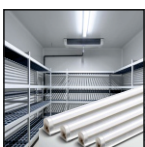
Circular Chart Recorder



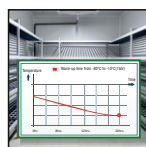
Adjustable Trays



Digital Controller with Audio Visual Alarm



Bright LED Lights



Low Power Consumption



Low Noise Cooling System



The name you can trust

India : sales@newtronic.in
International : exports@newtronic.in

Visit us on: www.newtronic.in

NEWTRONIC LIFECARE EQUIPMENT PVT. LTD.

ISO 9001:2008 Certified Company Safety Gloves

H.O.: Kanakia Wall Street, A-Wing 612, 6th Floor, Chakala, Andheri-Kurla Road, Andheri (E), Mumbai-400 093, India.T: +91-22-6853 4600

Plant: Plot No-1205 & 1206, G.I.D.C. Ind. Estate, Road No.: 13, At Umbergaon – 396171, Dist.-Valsad (Gujarat). India.

