



The name you can trust

# Smart Cool (Portable Deep Freezers)

Temp. Range: +5°C to -20°C



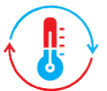
**Small | Sufficient | Efficient**

The NEWTRONIC SMART COOL is a simple and versatile Digital Portable Laboratory transporter designed for the transportation of critical samples that needs to be moved under low temperature conditions. Complete with an easy to read digital controller, this is an ideal "Last Mile Solution" for transporting vaccines by road as well as collecting samples in the field.

Ergonomically designed chambers for single hand operations



Double wall PUF Protection



Temperature Hold Over Time



Last Mile Solution



Top Side Door opening



Environmental Friendly



Alarms

Visit us on: [www.newtronic.in](http://www.newtronic.in)

# Smart Cool (Portable Deep Freezers)

Temp. Range: +5°C to -20°C

## Standard Features

Inner body	Stainless Steel (SS 304)
Outer body	PPGI (Pre-Painted Galvanised Iron)
Insulation	Double wall PUF construction ensures optimum insulation and protection of the transported goods with spring loaded top cover.
Door	Opening is on the top side. The door is made of solid insulation
Portability	Lightweight with side handles, Optional two wheeled Trolley for easy movement.
Controller	Electronic Controller with digital display
Alarms	Temperature high / low alarms
Cooling System	Hermitically sealed cooling system for efficient cooling Low noise and Low power consumption.
Power supply	230 Volts AC , 50 Hz mains supply. Also available with 60 Hz cycle
Temp. Hold Over Time	4 to 5 Hours



## Selection Guide

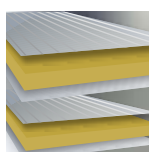
Model	Capacity Liter	Internal Size W* D* H*(mm)	External Size W* D* H*(mm)	Equipment Weight (kg)
NLSC60	60	490 X 350 X 350	650 X 595 X 805	45

## Optional Accessories

Data Logger	To automatically record parameters
Trolley	Two wheeled trolley for easy movement



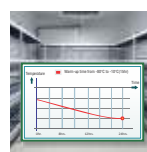
Digital Controller with Audio Visual Alarm



High Power PUF Insulation



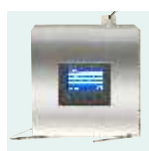
Low Noise Design



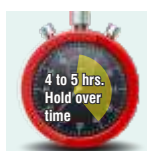
Low power Consumption



Portable Easy to Move



Data Logger



Temperature Hold Over Time



The name you can trust

India : sales@newtronic.in  
International : exports@newtronic.in  
Visit us on: www.newtronic.in

**NEWTRONIC LIFECARE EQUIPMENT PVT. LTD.**  
**ISO 9001:2008 Certified Company**

H.O.: Kanakia Wall Street, A-Wing 612, 6th Floor, Chakala, Andheri-Kurla Road, Andheri (E), Mumbai-400 093, India.T: +91-22-6853 4600

Plant: Plot No-1205 & 1206, G.I.D.C. Ind. Estate, Road No.: 13, At Umbergaon – 396171, Dist.-Valsad (Gujarat). India.

