



*The name you can trust*



Innovation | Technology | Precision



**Newtronic Lifecare Equipment Pvt. Ltd.**  
**[www.newtronic.in](http://www.newtronic.in)**

**Manufacturer of** Stability Chambers | Walk-In Chambers | Peltier Technology  
Low Temperature Chambers | Ultra Low Temperature Chambers | Clean Room Equipment  
Incubators | Ovens | Laboratory Equipment | Web Based Software

# Stability Chambers

## Stability Chambers



Suitable for 25°C 60%Rh, 30°C 65%Rh, 40°C 75%Rh, 30°C 75%Rh, 25°C 40%Rh, 40°C 25%Rh & many other such conditions.

**Temperature Range:** 20°C to 60°C  
**Humidity Range :** 40%Rh - 95%Rh  
**Capacity (Liters):** 200, 430, 735, 1000, 1500, 2000

## Photostability Chambers



Designed as per ICH Q1B, Option - 2 for forced degradation testing and confirmatory studies. Chambers are used to study the photogenic effect on the samples when exposed to UV light & day light separately or combined.

**Temperature Range:** 10°C to 40°C  
**Capacity (Liters):** 100, 227

## Freeze-Thaw Chambers



Designed as to study freezing & thawing effect on the products. The min. temperature, max. temperature & cyclic time are all user-settable allowing the user-settable a specific profile for their studies.

**Temperature Range:** -20°C to 50°C  
**Capacity (Liters):** 200, 300, 400, 700, 1050, 1500

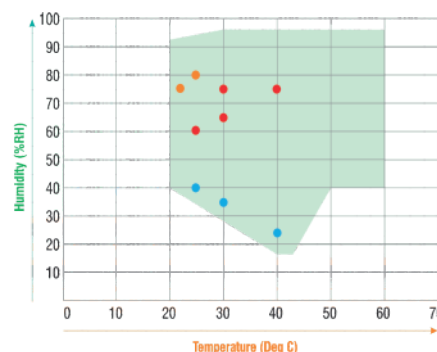
# Walk-In Stability Chambers

## Walk-In Stability Chambers



Applications include shelf life testing, stability testing, expiration date testing, accelerated aging and testing for pharmaceutical, packing, life science, medical storage and research.

### OPERATING RANGE



● General Conditions ● Semi-permeable Conditions ● MVTR and Other Special Conditions

# Peltier Technology

## Stability Chambers And Incubators Without Refrigeration



B.O.D. Incubator

Stability Chamber

Dual Incubator

**NO COMPRESSOR INSIDE**

### FEATURES



Precise Temperature Control



Environment Friendly



Quiet & Vibration Free



Compact & Light-Weight



User Friendly



Durable & Low Maintenance

# Low Temperature Chambers

## Laboratory Refrigerators



For storage of raw material at 5°C & for stability studies of refrigerated products.

**Temperature Range:** 2°C to 8°C  
**Capacity (Liters):** 200, 430, 735, 1000, 1500, 2000

## Combo Refrigerators



A two zoned temperature Refrigerator that offers Refrigerator and freezer for the storage of samples with different temperature requirement

**Temperature Range:**  
**Upper Chamber:** 2°C to 8°C  
**Lower Chamber:** -25°C to 0°C  
**Capacity (Liters):**  
**Upper Chamber:** 300 Liters  
**Lower Chamber:** 165 Liters

## Deep Freezers



For storage of samples & raw material that need to be refrigerated at sub-zero temperatures.

**Temperature Range:** -25°C to 0°C  
**Capacity (Liters):** 110, 208, 330, (Higher Capacities 413, 503 available upon request)

# Walk-In Chambers

## Walk-In Cold Room



For storage of raw material at 5°C & or stability studies of refrigerated products.

**Temperature Range:** 2°C to 8°C

## Walk-In Deep Freezer



Ideal for storage of biological samples in biotech, life science, clinical research as well as medical & pharmaceutical specimens, serums, vaccines, blood components.

**Temperature Range:** -25°C to 0°C

# Ultra Low Temperature Chambers

## Ultra Low Temperature Freezer



Designed for storing blood samples, reagents, vaccines, medications and others such products requiring very low temperatures.

**Temperature Range:** -86°C to -60°C  
**Capacity (Liters):** 100, 218, 398, 528, 778, 1008

## Plasma Freezer



For storage of samples & raw materials that need to be refrigerated at sub-zero temperatures.

**Temperature Range:** -40°C to -30°C  
**Capacity (Liters):** 110, 208, 330, 413, 503 (Higher Capacities available upon request)

# Clean Room Equipment

## Laminar Air Flow



For a sterile environment by directing clean, filtered air in a smooth, uniform flow to prevent contamination in sensitive workspaces.

**Size (in ft) :** 2'x2', 3'x2', 4'x2'

## Biological Safety Cabinet

"Tested & Passed as per NSF Standards"



Designed to protect users and the environment from harmful biological hazards. Biosafety chambers are essential tools for preventing contamination, safeguarding public health, and supporting scientific innovation. Available in Class A2.

**Size (in ft) :** 2'x2', 3'x2', 4'x2'

## Autoclave



Designed to be sterilized at high-pressure steam to eliminate harmful microorganisms, ensuring the safety and integrity of medical products.

**Temperature Range :** Upto 125°C  
**Capacity (Liters) :** 50, 100, 150, 200

# Incubators

## Walk-In Incubators



Ideal for growth and storage of bacterial culture. #1 choice for Media-Fill Incubation.

**Temperature Range:** 10°C to 60°C

## B.O.D. Incubators



Incubators to provide conditions for optimum growth of microbiology cultures. Specifically designed for long-term and stable continuous operations that is ideal for gentle incubation and conditioning for media preparation.

**Temperature Range:** 15°C to 60°C  
**Capacity (Liters):** 200, 430, 735, 1000, 1500, 2000

## Dual Incubators



It offers two chambers controlled by a single controller. The temperature conditions of both the Compartments are independent from each other.

**Temperature Range:** 15°C to 60°C  
**Capacity (Liters):** (200+200), (400+400)

# Incubators & Ovens

## Bacteriological Incubators



Ideal for incubation of micro-organism, eggs etc. to cater mass-scale production of vaccines & other drug product.

**Temperature Range:** (Ambient +5°C) to 60°C  
**Capacity (Liters):** 90, 121, 216, 324

## Vacuum Ovens



These units allow gentle drying of heat sensitive materials & highly hygroscopic materials.

**Temperature Range:** 40°C to 200°C  
**Capacity (Liters):** 30

## Laboratory Ovens



These units are primarily used in application which require rapid drying and sterilization.

**Temperature Range:** 50°C to 280°C  
**Capacity (Liters):** 90, 121, 216, 324  
**Temperature Range:** 50°C to 110°C  
**Capacity (Liters):** 430, 735, 1000

# Laboratory Equipment

## Pharmaceutical Refrigerator



Ideal for storage of vaccine, medical and pharmaceutical supplies.

**Temperature Range:** 2°C to 8°C  
**Capacity (Liters):** 200, 300, 350, 400, 500, 630, 800, 1000

## CO<sub>2</sub> Incubator



Ideal for controlled in-vitro environment for optimum tissue cell culture growth in sterile environment.

**Temperature Range:** 7°C (above ambient) to 50°C  
**Capacity (Liters):** 100, 170

## Pass-Through Ovens



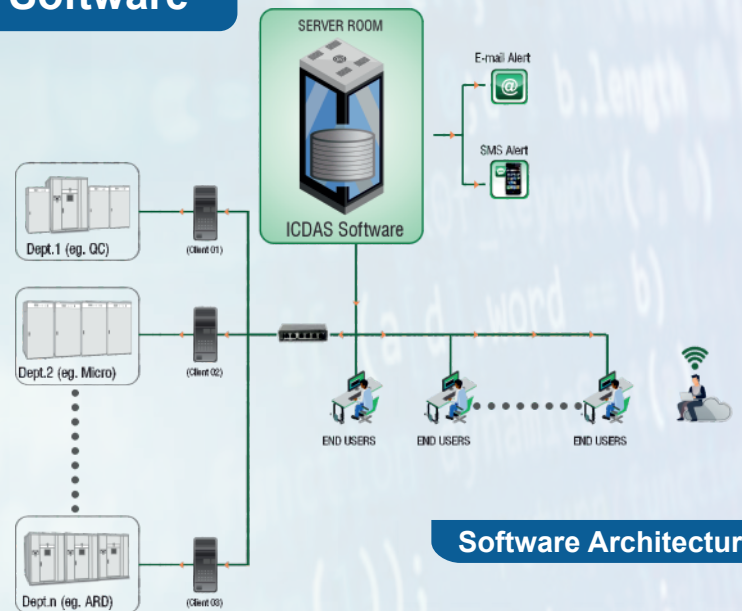
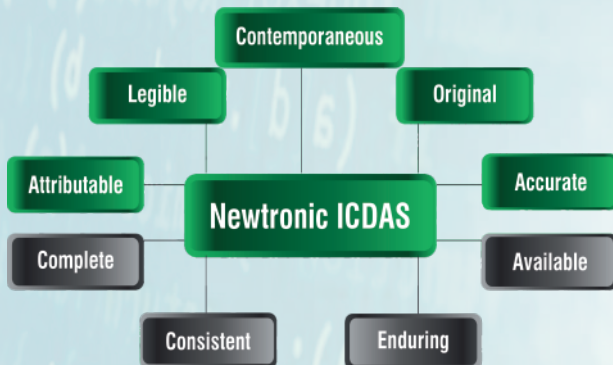
Designed for easy passway of lab apparatus & glassware between wash area & analysis room along with drying application.

**Temperature Range:** 50°C to 110°C  
**Capacity (Liters):** 430, 735, 1000

## ICDAS - Web-based 21 CFR Part 11 Software

### Access Anywhere Anytime

Instantly connect and control your chambers from anywhere without installing software.



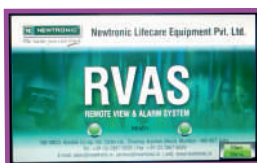
**NOTES:**

Single Server based Installation | Clients are license-based | 1 client per dept. for upto 15 equipments | Desktop-based installation also available

## Remote View & Alarm System (RVAS)

Take Remote Monitoring to an in-depth level of information-sharing with NEWTRONIC's Remote View and Alarm System (RVAS).

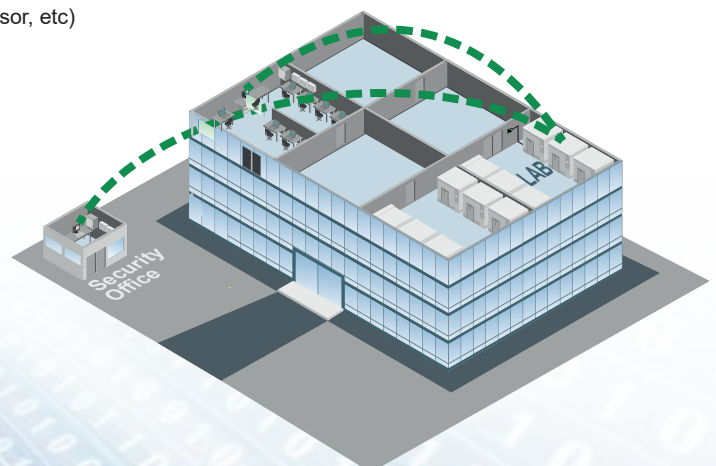
1. View & Acknowledge real-time T/RH reading of EACH sensor
2. View status of each I/O Components (humidifier, heater, compressor, etc)
3. View status of Utilities (Main Supply, Door, Water Level)



- 7" colour touch screen display
- Connect upto 20 equipments on TCP/IP with on-site programming
- Audio hooter & Visual display to notify alarms & deviations



- Eliminate the need for cabling
- Department-wise segregation of users & chambers
- System Diagnosis
- IQ, OQ protocols



# Features | Functions | Flexibility



Seamless Configuration



Low Power Consumption



Ever-ready for Surprise Audits



Date & Timestamp Audit Trails



Restricted Access Rights & Privileges



Standby Humidity & Cooling Systems



PLC-based/IOT-enabled Controllers



Extended Warm-up Time



Documentation & Training



Multiple Interfaces



Go Paperless



LDAP



Complete Range of Alarms



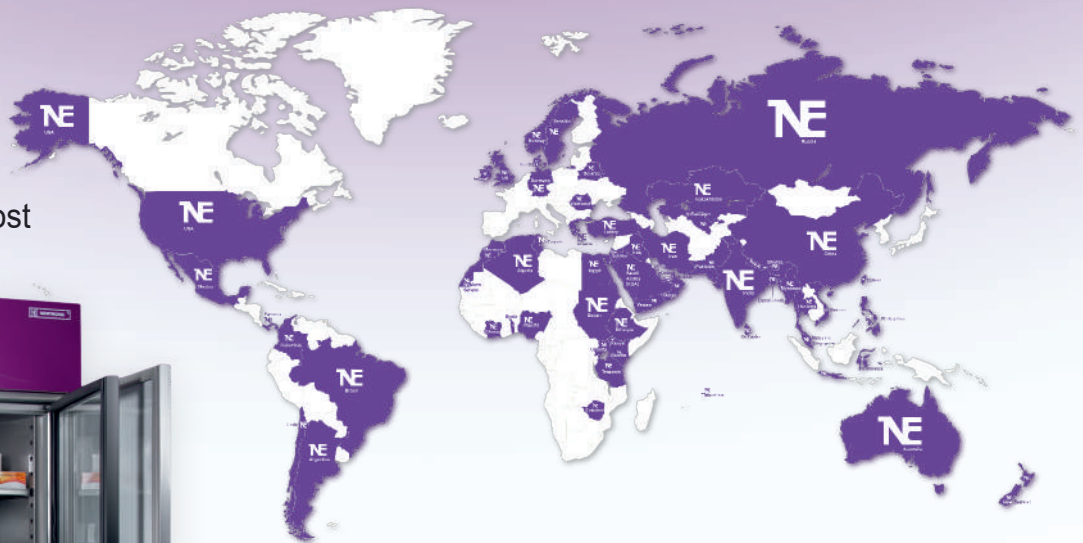
Excellent Uniformity



Multiple Sensors

## Precise Control with diverse Application

For your sample's utmost safety and integrity.



NLEPL/CC/0326/4.3

## Internationally proven innovative product range

### Newtronic Service Centers:

Domestic:	International:		
Ahmedabad	Algeria	Kazakhstan	Singapore
Baddi	Argentina	KSA	Sri Lanka
Bangalore	Australia	Latin America	Thailand
Chennai	Bangladesh	Malaysia	Turkey
Delhi	Bahrain	Mexico	Uganda
Goa	China	Morocco	UK
Hyderabad / Vizag	Egypt	Nepal	USA
Indore	Ethiopia	New Zealand	Vietnam
Kolkata / Sikkim	Indonesia	Nigeria	
Mumbai	Iran	Oman	
Pune	Iraq	Philippines	
Vadodara	Jordan	Russia	
<a href="mailto:service@newtronic.in">service@newtronic.in</a>	<a href="mailto:service.exports@newtronic.in">service.exports@newtronic.in</a>		

\* Newtronic reserve the right to change product specifications without prior notice



*The name you can trust*

NEWTRONIC LIFECARE EQUIPMENT PVT. LTD.

ISO 9001:2015 | ISO 13485:2016 | NABL ISO/IEC 17025:2005

### Email:

**India** : [sales@newtronic.in](mailto:sales@newtronic.in)

**International** : [exports@newtronic.in](mailto:exports@newtronic.in)

**Whatsapp No.:** +91 82918 21223

**Visit us on** : [www.newtronic.in](http://www.newtronic.in)

### H.O.:

Kanakia Wall Street, A- Wing-612 Unit,  
6th Floor, Chakala, Andheri Kurla Road,  
Nr.Chakala Metro Station, Andheri (East),  
Mumbai- 400093. India  
T: +91 22 6853 4600

### Plant:

Plot No-1205 & 1206,  
G.I.D.C. Ind. Estate, Road No.: 13,  
Umbergaon- 396171, Dist.-Valsad,  
Gujarat, India.