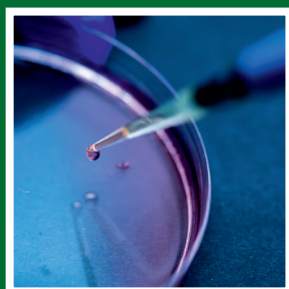


# Plant Growth Chambers



**Temperature Range:** 10°C - 35°C Lights On  
5°C - 35°C Lights Off

**Humidity Range:** 40%Rh to 90%Rh Lights On  
40%Rh to 90%Rh Lights Off

# Features | Functions | Flexibility



- Agriculture, agrobiology
- Horticulture, fruit farming, winemaking, cultivation of ornamental plants
- Green genetic engineering
- Phytobiology, photobiology
- Plant physiology and plant genetics
- Plant protection, plant health
- Entomology

## Key Features

- Excellent temperature stability
- High quality LED lights
- Interlocked insulated panels for Walk-In Chambers
- High & low limit temperature protection
- Color touch screen display
- Uniform air flow inside chamber
- User programmable alarm settings
- Unparalleled light efficiency
- Automatic PLC controls
- Stainless steel inner construction
- Adjustable shelving arrangement

## Climatic Control

- Air based, CFC free, mechanical refrigeration by sealed condenser group
- Heating technology with stainless steel electric heaters
- Humidification by ultrasonic generator with automatic water level control

## Key Features

- Dynamic airflow through blowers
- Forced airflow in horizontal and downward direction
- Horizontal airflow across the shelves to assure uniformity to all growth area

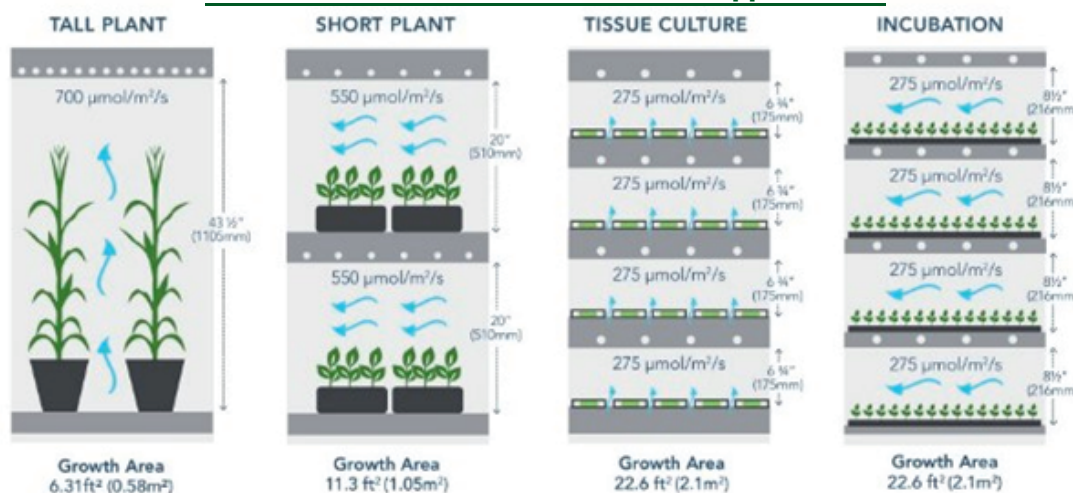
## Research Protection and Security

- Independent thermostats for maximum and minimum temperature limits
- Automatic cut-off function, in case of excessive heating or cooling
- Configurable maximum and minimum temperature and humidity limits
- Visual and audible alarms for temperature and humidity deviations

## PLC Controller

- Controller exclusively developed by Newtronic
- Controls every environmental variable available (Temperature, Humidity, Lights)
- Easy to use touch-screen interface
- Password protection of the controller functions
- Configurable high and low temperature and humidity alarms and automatic notifications
- Recording of all alarms
- Non-volatile memory, allowing the automatic restart of previously defined power failure, without losing data
- Real-time monitoring of all the functions and active components of the equipment, allowing for a fast and accurate diagnostic in case of malfunction

## Different Airflow Patterns based on Application



Precise Control with Diverse application

# Complete Controlled Environment....

## Standard Equipments

- Doubled walled with PUF insulation
- SS 304 Interior & exterior either SS 304 or Mild Steel
- Adjustable Stainless steel trays. Growth height can be adjusted by adding or removing the trays
- Full-length inner glass door & metal door with gasket & lock on the outside.
- LED lights, Day/night programmable cycle
- Forced air circulation for Uniform temperature
- PU wheels for easy movements
- U shaped SS tubular heater
- CFC free cooling system consists of hermetically sealed compressor coupled with evaporation coil and condenser.
- Complete operation driven through PLC with data logging capacity of up to 1000 readings
- Printer interface facility
- All operations through a 4" color touch screen display
- High quality Euporean make Temperature & Humidity combo sensor with 4-20mA output.
- Safety device: Low & High temperature cut-off settable thermostats high humidity cut off device
- Audio- visual alarms for deviations
- Operation & Maintenance Manual

**Power Supply:** 230 Volts, 50 Hz mains supply. Also available with 60 Hz cycle.

## Optional Accessories

- CO<sub>2</sub> control 0-1000 ppm.
- Steam based Humidification system with automatic water level control
- ICDAS - A Single Software installation for all Newtronic make equipments
- PAR Light
- Standby Cooling and Humidity options are available
- Door Access System (Biometric / Numeric in case of PLC-based)
- Door Access System (Biometric only in case of PID-based)

## Plant Growth Selection Guide (Model with Interior & Exterior made of Stainless Steel)

Model	Capacity		Internal Size (H*W*D) mm	External Size (H*W*D) mm	Trays Qty.	Trays Size (W*D) mm	Approx. Weight (Kg)	
	CuFt.	Liter					Equip.	Ship.
NLPG7SI	7	200	800 X 500 X 500	1295 X 640 X 990	3	430 X 460	150	225
NLPG16SI	16	430	1200 X 600 X 600	1695 X 740 X 1110	4	530 X 560	250	325
NLPG26SI	26	735	1500 X 700 X 700	2050 X 840 X 1210	5	630 X 660	275	350
NLPG34SI	34	1000	1500 X 800 X 800	2050 X 940 X 1310	5	730 X 760	350	425
NLPG54SI	54	1500	1500 X 1600 X 600	2050 X 1740 X 1125	10	695 X 560	350	450
NLPG71SI	71	2000	1500 X 1600 X 800	2050 X 1740 X 1325	10	695 X 760	375	475

\* Models with exterior of mild Steel & interior of SS 304 will be available on request.

